

Flygt 2870.180

Table of Contents

1 Introduction.....	2
1.1 Specially approved products.....	2
2 Product Description.....	3
2.1 Products included.....	3
2.2 The data plate.....	3
2.3 Product denomination.....	3
3 Spare Parts.....	5
3.1 Exploded view.....	5
3.2 List of parts.....	6

1 Introduction

Purpose of this manual

The purpose of this manual is to provide necessary information on spare parts and accessories order.

Disclaimer

Always use genuine Flygt parts. The use of other spare parts or accessories can invalidate any claims for warranty or compensation. Xylem does not take any responsibility for damages that are caused by the use of non-original parts. For more information, contact your local sales and service representative.

Data for ordering spare parts

The following information is needed for spare part orders:

- Serial number of the product
- Part number
- Quantity of bulk material, see * in tables

1.1 Specially approved products

Qualification of personnel

Only Xylem or Xylem-authorized service personnel may undertake repair work on specially approved products.

Dimensional accuracy inspection

Spare parts marked with (Ex) after the part number are subject to dimensional accuracy inspection when used in specially approved products.

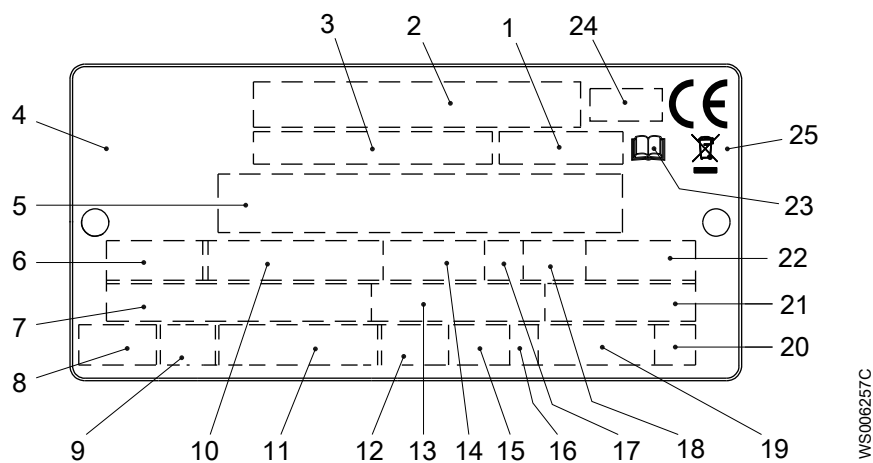
2 Product Description

2.1 Products included

Pump model	Standard	Ex-proof	MSHA	Drainage	Sludge	Pareo™
2870.180	X			X		X

2.2 The data plate

The data plate is a metal label that is located on the main body of the products. The data plate lists key product specifications. Specially approved products also have an approval plate.



1. Curve code or Propeller code
2. Serial number
3. Product number
4. Country of origin
5. Additional information
6. Phase; type of current; frequency
7. Rated voltage
8. Thermal protection
9. Thermal class
10. Rated shaft power
11. International standard
12. Degree of protection
13. Rated current
14. Rated speed
15. Maximum submergence
16. Direction of rotation: L=left, R=right
17. Duty class
18. Duty factor
19. Product weight
20. Locked rotor code letter
21. Power factor
22. Maximum ambient temperature
23. Read installation manual
24. Notified body, only for EN-approved Ex products
25. WEEE-Directive symbol

Figure 1: The data plate

2.3 Product denomination

Reading instruction

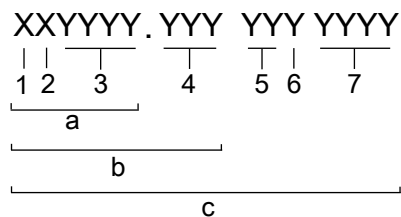
In this section, code characters are illustrated accordingly:

X = letter

Y = digit

The different types of codes are marked up with a, b and c. Code parameters are marked up with numbers.

Codes and parameters

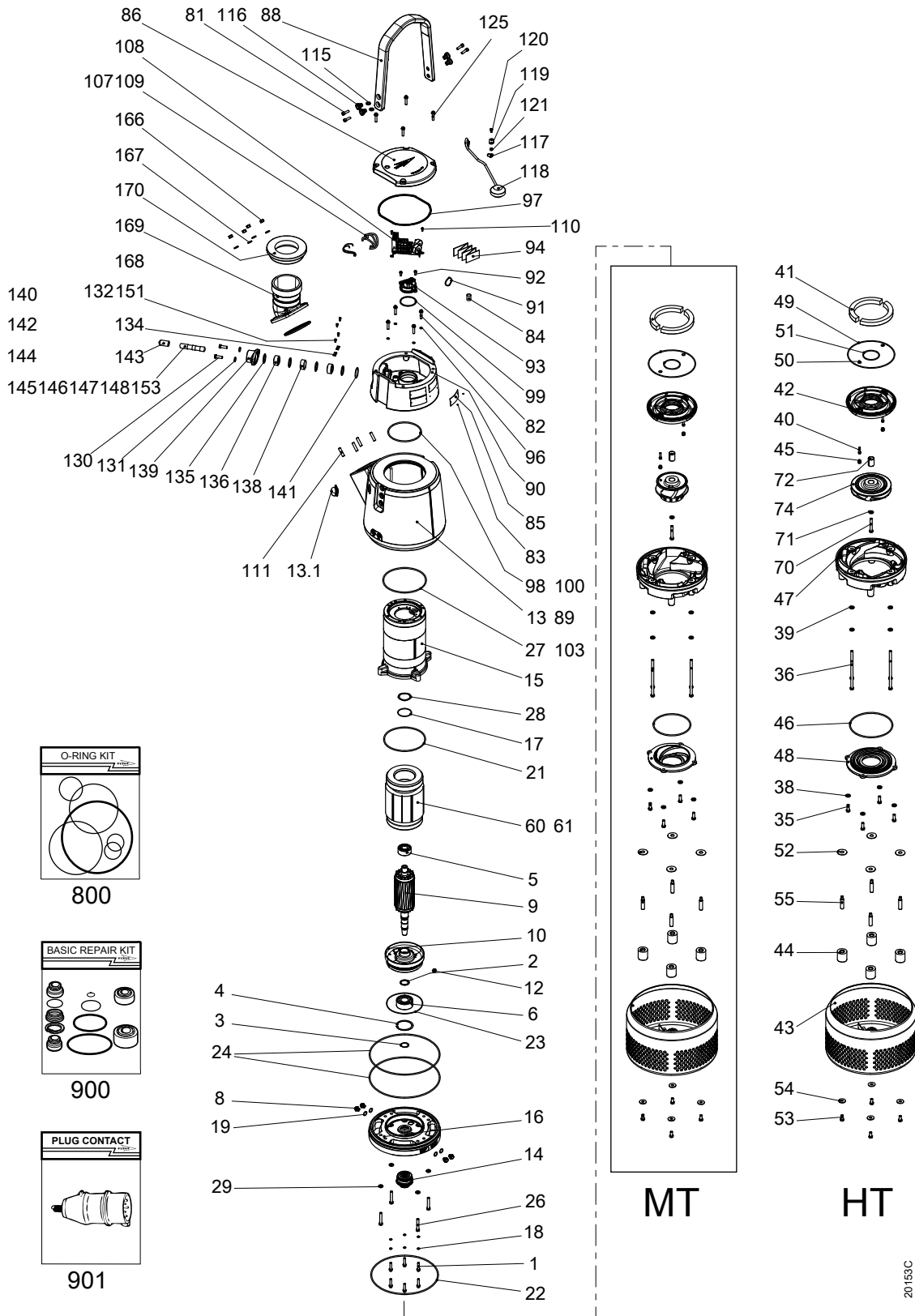


WS006265B

Type of Callout	Number	Indication
Type of code	a	Sales denomination
	b	Product code
	c	Serial number
Parameter	1	Hydraulic end
	2	Type of installation
	3	Sales code
	4	Version
	5	Production year
	6	Production cycle
	7	Running number

3 Spare Parts

3.1 Exploded view



20155C

3.2 List of parts

Pos. No	Part. No	Type	Denomination	Qty/Version
				180
1	81 64 91		Hexagon flange screw M10X45-A2-70	6
2	82 44 15		Supporting washer 40X50X2.5	1
3	82 59 06		Retaining ring SGA 40	1
4	83 07 62		Retaining ring JB 90	1
5	83 30 16		Ball bearing 30X72X30.2 MM	1
6	83 30 18		Ball bearing 40X90X36.5 MM	1
7	90 17 52		Oil ISO VG 32	*
8	428 22 17		Inspection screw BRASS	4
9	641 91 03	(Ex)	Shaft unit	1
10	642 10 00		Bearing holder	1
12	665 29 00	(Ex)	Hexagon head screw	1
13	774 38 00		Outer casing	1
14	770 85 30		Mechanical seal dbl. WCCR/ WCCR, WCCR/WCCR	1
15	774 18 00		Stator housing	1
16	774 19 02		Adapter	1
17	82 71 72		O-ring 71.2X3 FPM	1
18	82 73 82		O-ring 10.3X2.4 NBR	6
19	82 72 95		O-ring 19.2X3 FPM	4
21	82 74 95		O-ring 219.3X5.7 NBR	1
22	82 75 06		O-ring 359.3X5.7 NBR	1
23	82 78 35		O-ring 175X3 NBR	1
24	82 75 07		O-ring 379.3X5.7 NBR	2
26	81 41 63		Hexagon head screw M12X70-A2-70	4
27	82 74 96		O-ring 229.3X5.7 NBR	1
28	82 56 25		Spring washer 71.5X59X0.55 MM	1
29	82 37 05		Plain washer 13X24X4-A2-170HV	4
30	706 11 00		Air release valve	1
35	81 41 56		Hexagon head screw M12X35-A2-70	4
36	81 41 74		Hexagon head screw M12X180-A2-70	4
38	82 37 05		Plain washer 13X24X4-A2-170HV	4
39	82 37 05		Plain washer 13X24X4-A2-170HV	4
40	83 03 02		Hex.socket hd screw M8X30-A4-70	2
41	83 94 66		Pressure equalizer L=310 MM	2
42	665 32 00		Seal housing cov.coa	1
43	826 28 00		Strainer	1

Pos. No	Part. No	Type	Denomination	Qty/Version
				180
44	784 85 00		Damper	4
45	710 30 00		Protective plug	2
46	82 74 91		O-ring 189.3X5.7 NBR MT	1
46	82 74 95		O-ring 219.3X5.7 NBR HT	1
47	665 26 00		Diffuser coat. NBR MT	1
47	774 76 00		Diffuser coat. PU MT	1
47	665 24 00		Diffuser coat. NBR HT	1
47	774 77 00		Diffuser coat. PU HT	1
48	665 30 00		Suction cover MT B Material suction cover: Hard iron	1
48	665 28 00		Suction cover HT B Material suction cover: Hard iron	1
48	739 68 00		Suction cover HT Material suction cover: Stainless steel	1
49	82 81 96		O-ring 246.0X4.0 FPM	1
50	82 79 11		O-ring 11.6X2.9 FPM	2
51	82 95 69		O-ring 84.4X4 FPM	1
52	82 40 83		Plain washer 20.5X52X2-A2-70	4
53	81 41 54		Hexagon head screw M12X25- A2-70	4
54	82 37 97		Plain washer 13X37X3- A4-170HV	4
55	784 87 00		Holder	4
60	661 39 08	(Ex)	Stator 21-18-2b 6-leads 3-phase 60 Hz 2-poles 200V-208V D	1
60	661 39 02	(Ex)	Stator 21-18-2b 6-leads 3-phase 50 Hz 2-poles 380V-400V Y 3-phase 60Hz 440V-480V Y 6-leads 3-phase 50 Hz 2-poles 220V-230V D 380V-400V Y	1
60	661 39 06	(Ex)	Stator 21-18-2b 6-leads 3-phase 60 Hz 2-poles 220V-240V D	1
60	661 39 04	(Ex)	Stator 21-18-2b 9-leads 3-phase 60 Hz 2-poles 220V-240V Y// 9-leads 3-phase 60 Hz 2-poles 440V-480V YSER	1
60	661 39 07	(Ex)	Stator 21-18-2b 6-leads 3-phase 50 Hz 2-poles 380V-400V D 660V-690V Y 6-leads 3-phase 50 Hz 2-poles 660V-690V Y 6-leads 3-phase 50 Hz 2-poles 380V-400V D 6-leads 3-phase 60 Hz 2-poles 440V-480V D	1
60	661 39 12	(Ex)	Stator 21-18-2b 3-leads 3-phase 60 Hz 2-poles 460V Y	1
60	661 39 10	(Ex)	Stator 21-18-2b 6-leads 3-phase 60 Hz 2-poles 380V-400V D	1

Pos. No	Part. No	Type	Denomination	Qty/Version
				180
60	661 39 11	(Ex)	Stator 21-18-2b 12-leads 3-phase 60 Hz 2-poles 440V-460V DSER	1
60	661 39 01	(Ex)	Stator 21-18-2b 12-leads 3-phase 60 Hz 2-poles 380V Y//	1
60	661 39 03	(Ex)	Stator 21-18-2b 6-leads 3-phase 50 Hz 2-poles 415V-440V D	1
60	661 39 03	(Ex)	Stator 21-18-2b 6-leads 3-phase 60 Hz 2-poles 1000V Y	1
60	661 39 03	(Ex)	Stator 21-18-2b 6-leads 3-phase 50 Hz 2-poles 500V D	1
60	661 39 03	(Ex)	Stator 21-18-2b 6-leads 3-phase 60 Hz 2-poles 575V-600V D	1
60	661 39 13	(Ex)	Stator 21-18-2b 3-leads 3-phase 60 Hz 2-poles 575V-600V Y	1
60	661 39 05	(Ex)	Stator 21-18-2b 6-leads 3-phase 50 Hz 2-poles 1000V Y	1
60	661 39 05	(Ex)	Stator 21-18-2b 6-leads 3-phase 50 Hz 2-poles 525V-550V D	1
60	661 39 05	(Ex)	Stator 21-18-2b 6-leads 3-phase 50 Hz 2-poles 525V-550V D 1000V Y	1
61	83 44 23		Closed-end splice 4.0-9.0 (AWG 8)	1-3
70	81 56 93		Hexagon head screw M12X80- A4-80	1
71	82 37 05		Plain washer 13X24X4- A2-170HV	1
72	720 14 00		Sleeve unit	1
72,1	643 65 01		Sleeve	1
72,2	643 66 00		Adjustment screw	1
74	665 37 00		Impeller B-impeller MT 50Hz 3-phase Maximum temperature 40 DC Material Hard-Iron TM Curve code: 226	1
74	665 37 02		Impeller B-impeller MT 60Hz 3-phase Maximum temperature 40 DC Material Hard-Iron TM Curve code: 228	1
74	665 37 01		Impeller B-impeller MT 50Hz 3-phase Maximum temperature 70 DC Material Hard-Iron TM Curve code: 230	1
74	665 37 03		Impeller B-impeller MT 60Hz 3-phase Maximum temperature 70 DC Material Hard-Iron TM Curve code: 232	1
74	665 36 00		Impeller B-impeller HT 50Hz 3-phase Maximum temperature 40 DC Material Hard-Iron TM Curve code: 251	1
74	665 36 02		Impeller B-impeller HT 60Hz 3-phase Maximum temperature 40 DC Material Hard-Iron TM Curve code: 253	1

Pos. No	Part. No	Type	Denomination	Qty/Version
				180
74	665 36 01		Impeller B-impeller HT 50Hz 3-phase Maximum temperature 70 DC Material Hard-Iron TM Curve code: 255	1
74	665 36 03		Impeller B-impeller HT 60Hz 3-phase Maximum temperature 70 DC Material Hard-Iron TM Curve code: 257	1
74	739 64 00		Impeller B-impeller HT 50Hz 3-phase Maximum temperature 40 DC Material Stainless steel, castings Curve code: 266	1
74	739 64 02		Impeller B-impeller HT 60Hz 3-phase Maximum temperature 40 DC Material Stainless steel, castings Curve code: 267	1
74	739 64 01		Impeller B-impeller HT 50Hz 3-phase Maximum temperature 70 DC Material Stainless steel, castings Curve code: 268	1
74	739 64 03		Impeller B-impeller HT 60Hz 3-phase Maximum temperature 70 DC Material Stainless steel, castings Curve code: 269	1
89	718 05 00		Sticker CUT HAZARD	1
93	734 59 00		El.lead through unit 12X + 6X	1
93	774 92 00		Entrance flange	1
94	773 49 05		Connection plate	1
101	773 42 09		Cable set	1
102	821 49 00		Sticker	1
103	340 71 00		Instruction plate	1
107	573 58 63		Single-core cable Contactor unit Thermal contact supervision	1
107	573 58 69		Single-core cable Contactor unit Thermal contact supervision	1
108	693 79 02		Con.term.board unit Terminal board Max 1000V 50/60Hz 3-phase 0V - 1000V CSA approved Motor cable conductor size max: 35mm ²	1
108	821 02 03		Sensor unit Sensor unit DCM 711 50/60Hz 3- phase 0V - 1000V CSA approved Motor cable conductor size max: 35mm ²	1

Pos. No	Part. No	Type	Denomination	Qty/Version
				180
108	673 89 19		Contactor unit	1
			Contactor unit 50Hz 3-phase 500V - 500V Not CSA approved	
			Contactor unit 50Hz 3-phase 415V - 440V Not CSA approved	
			Contactor unit 60Hz 3-phase 380V - 400V Not CSA approved	
			Contactor unit 50Hz 3-phase 380V - 400V Float switch Not CSA approved	
			Contactor unit 50Hz 3-phase 380V - 400V Not CSA approved	
108	718 73 28		Contactor unit	1
			Contactor unit 50Hz 3-phase 525V - 550V Not CSA approved	
			Contactor unit 60Hz 3-phase 575V - 600V CSA approved	
108	718 73 29		Contactor unit	1
			Contactor unit 60Hz 3-phase 440V - 480V CSA approved	
			Contactor unit 60Hz 3-phase 380V - 400V CSA approved	
108	693 79 01		Con.term.board unit	1
			Terminal board 60Hz 3-phase 0V - 480V Y/D Not CSA approved Motor cable conductor size max: 16mm ²	
			Terminal board 50Hz 3-phase 0V - 415V Y/D Not CSA approved Motor cable conductor size max: 16mm ²	
109	761 62 04		Cable set	1
111	80 95 29		Stud M12X35-A2-70	4
115	81 79 47		Lock washer A2-10	4
118	761 04 06		Level switch EU	1
			Sensor unit DCM 711 50Hz 3- phase 0V - 1000V Float switch with isolated input Not CSA approved Motor cable conductor size max: 35mm ²	
118	761 04 07		Level switch US/CDN	1
			Sensor unit DCM 711 60Hz 3- phase 0V - 1000V Float switch with isolated input CSA approved Motor cable conductor size max: 35mm ²	
118,1	83 41 80		Flat pin sleeve 1.0-2.5 MM2	1
118,2	83 41 83		Insulating sleeve 0.5-6 MM2	1
118,3	83 42 38		End sleeve 1.5 MM2; L=7 MM	1
118,5	83 43 62		Cable lug UL/CSA 0.50-1.65 MM2 M6	1
118,6	83 44 24		Closed-end splice 3-6 (AWG 12-10)	1
118,7	83 70 50		Plain washer 10X18.5X0.8- STEEL-FZB	2
118,8	84 32 31		Level switch	1
118,9	561 64 03		Bending protection	1
118,10	694 76 03		Gland screw PR 20.4	1

Pos. No	Part. No	Type	Denomination	Qty/Version
				180
118,10	83 70 50		Plain washer 10X18.5X0.8-STEEL-FZB	2
118,2	83 41 80		Flat pin sleeve 1.0-2.5 MM2	1
118,3	83 41 83		Insulating sleeve 0.5-6 MM2	1
118,4	83 42 38		End sleeve 1.5 MM2; L=7 MM	1
118,6	83 43 62		Cable lug UL/CSA 0.50-1.65 MM2 M6	1
118,7	83 44 24		Closed-end splice 3-6 (AWG 12-10)	1
118,9	83 54 36		Level switch	1
118,11	561 64 03		Bending protection	1
118,12	694 76 03		Gland screw PR 20.4	1
118,13	713 69 14		Connection plate	1
125	82 00 30		Hex.socket hd screw M8X16-A2-70	2
130	81 41 56		Hexagon head screw M12X35-A2-70	2
131	82 37 05		Plain washer 13X24X4-A2-170HV	2
132	83 02 73		Hex.socket hd screw M6X12-A4-70	2
134	642 16 00	(Ex)	Earthing plate	1-2
135	82 40 81		Plain washer 32.5X52X2-A2-70	4
135	82 40 82		Plain washer 34.5X52X2-A2-70	4
135	82 40 69		Plain washer 35.5X52X2-A2-70	4
136	84 18 01		Seal sleeve (17)-20 MM NBR	2
136	84 18 00		Seal sleeve (14)-17 MM NBR	2
136	84 18 02		Seal sleeve (20)-23 MM NBR	2
136	84 18 03		Seal sleeve (23)-26 MM NBR	2
136	84 18 04		Seal sleeve (26)-29 MM NBR	2
136	84 18 06		Seal sleeve (32)-35 MM NBR	2
138	597 98 02	(Ex)	Sleeve	1
139	642 17 04		Entrance flange (12)-35 MM	1
140	94 20 59		Motor cable subcab 4G2.5+2X1.5	Power cable x 1 17 - 18mm Max 750V *
140	94 20 43		Motor cable subcab 4G4	Power cable x 1 SUBCAB 4G4 16 - 17mm Max 750V *
140	94 20 60		Motor cable subcab 4G4+2X1.5	Power cable x 1 20 - 22mm Max 750V *
140	94 20 80		Motor cable subcab 7G4+2X1.5	Power cable x 1 24 - 26mm Max 750V Only for YD-connection *
140	94 20 44		Motor cable subcab 4G6	Power cable x 1 18 - 19mm Max 750V *
140	94 20 56		Motor cable subcab 4G6+2X1.5	Power cable x 1 24 - 26mm Max 750V *
140	94 19 80		Motor cable subcab 7G6+S(2X0.5)	Power cable x 1 24 - 26mm Max 1000V Only for YD-connection *

Pos. No	Part. No	Type	Denomination	Qty/Version	
				180	
140	94 19 81		Motor cable subcab 4G10+S(2X0.5)	Power cable x 1 24 - 26mm Max 1000V	*
140	94 19 82		Motor cable subcab 4G16+S(2X0.5)	Power cable x 1 26 - 28mm Max 1000V	*
140	94 21 05		Motor cable subcab 10 AWG/4	Power cable x 1 18 - 19,70mm Max 600V	*
140	94 21 06		Motor cable	Power cable x 1 SUBCAB 10AWG/3-2-1-GC 20,30 - 22,30mm Max 600V	*
140	94 21 08		Motor cable	Power cable x 1 SUBCAB 8AWG/3-2-1-GC 27,20 - 29,20mm Max 600V	*
140	94 21 10		Motor cable 4AWG/3-2-1-GC	Power cable x 1 SUBCAB 4AWG/3-2-1-GC 32,80 - 34,80mm Max 600V	*
140	94 17 24		Motor cable SCREENED 6X2,5+2*1,5	Power cable x 1 18,10 - 19,90mm Max 1000V Only for YD-connection	*
140	94 19 90		Motor cable subcab S3X2.5+3X2.5/3+S(4X0.5)	Power cable x 1 18 - 20mm Max 1000V	*
140	94 19 91		Motor cable subcab S3X6+3X6/3+S(4X0.5)	Power cable x 1 20 - 22mm Max 1000V	*
140	94 19 92		Motor cable subcab S3X10+3X10/3+S(4X0.5)	Power cable x 1 24 - 26mm Max 1000V	*
141	82 74 63		O-ring 49.5X3 NBR		1
142	82 70 86		Cap 6X16 MM PVC		1
142	82 70 85		Cap 5X10 MM PVC		1
142	82 70 87		Cap 7X16 MM PVC		1
143	82 97 75		Cap 25X45 MM PVC		1
143	82 97 74		Cap 24X45 MM PVC		1
143	82 97 76		Cap 26X45 MM PVC		1
143	82 97 68		Cap 18X25 MM PVC		1
143	82 97 71		Cap 21X45 MM PVC		1
143	82 97 73		Cap 23X45 MM PVC		1
144	83 42 36		End sleeve 0.75 MM ² ; L=6 MM		2
144	83 42 36		End sleeve 0.75 MM ² ; L=6 MM		6
144	83 42 29		End sleeve 4 MM ² ; L=10 MM		3
144	83 42 34		End sleeve 25 MM ² ; L=15 MM		3
144	83 42 35		End sleeve 10 MM ² ; L=12 MM		1
145	83 42 62		Closed-end splice 0.33-0.82 (AWG 22-18)		2
145	83 44 24		Closed-end splice 3-6 (AWG 12-10)		1
146	83 43 62		Cable lug UL/CSA 0.50-1.65 MM ² M6		1
147	94 03 30		Shrink hose ID=12 MM		*
148	94 03 33		Shrink hose ID=3.2 MM		*
148	94 03 34		Shrink hose ID=6.4 MM		*

Pos. No	Part. No	Type	Denomination	Qty/Version
				180
151	83 02 73		Hex.socket hd screw M6X12-A4-70	2
153	93 00 77		Shrink hose ID=6.4 MM	*
153	93 00 78		Shrink hose ID=9.5 MM	*
154	84 06 61		Plug contact	1
166	82 23 35		Hexagon nut M12-A4-70	4
167	82 37 05		Plain washer 13X24X4-A2-170HV	4
168	275 17 00		U-ring	1
169	665 15 00		Discharge connection 4" DN 100 Hose aluminium	1
169	665 15 01		Discharge connection ISO G4" DN 100 Thread: ISO G4A Outer aluminium	1
169	665 15 04		Discharge connection 4" DN 100 Thread: Victaulic groove Outer aluminium	1
169	665 15 03		Discharge connection 4-8 NPT DN 100 Thread: NPT 4-8 Outer aluminium	1
169	665 16 00		Discharge connection 6" DN 150 Hose aluminium	1
169	665 16 01		Discharge connection ISO G6" DN 150 Thread: ISO G6A Outer aluminium	1
169	665 16 04		Discharge connection 6" DN 150 Thread: Victaulic groove Outer aluminium	1
169	665 16 03		Discharge connection 6-8 NPT DN 150 Thread: NPT 6-8 Outer aluminium	1
170	83 19 34		Coupling part STORZ ISO G4 133MM DN 100 Thread: ISO G4A Outer Quick coupling: Storz diam=133 mm aluminium	1
170	83 19 33		Coupling part STORZ ISO G4 115MM DN 100 Thread: ISO G4A Outer Quick coupling: Storz diam=115 mm aluminium	1
170	83 19 36		Coupling part DN 150 Thread: ISO G6A Outer Quick coupling: Storz diam=160 mm aluminium	1
180	82 20 88		Drive screw 4X5-A2/A4	2
181	630 76 00		Plate HOT WATER PRODUCT	1
800	782 46 00		O-ring kit	1
801	786 82 00		Zinc anode kit	1

Pos. No	Part. No	Type	Denomination	Qty/Version
				180
815	824 35 08		<p>Starter</p> <p>Starter (Large box) DCM 711 3-phase 50 Hz 415V - 440 V Thermal contact supervision Cable area max: 13,30 mm² Bluetooth</p> <p>Starter (Large box) DCM 711 3-phase 60 Hz 575V - 600 V Thermal contact supervision Cable area max: 13,30 mm² Bluetooth</p> <p>Starter (Large box) DCM 711 3-phase 50 Hz 500V - 500 V Thermal contact supervision Cable area max: 13,30 mm² Bluetooth</p> <p>Starter (Large box) DCM 711 3-phase 60 Hz 440V - 480 V Thermal contact supervision Cable area max: 13,30 mm² Bluetooth</p> <p>Starter (Large box) DCM 711 3-phase 60 Hz 380V - 400 V Thermal contact supervision Cable area max: 13,30 mm² Bluetooth</p> <p>Starter (Large box) DCM 711 3-phase 50 Hz 380V - 400 V Thermal contact supervision Cable area max: 13,30 mm² Bluetooth</p>	1
815	554 30 19		<p>Starter START 351-400-B-532-32</p> <p>351 3-phase 50 Hz 380V - 415 V Current range: 24 - 32 A Thermal contact supervision Overload supervision Phase sequence indicator Supply connection CEE 5-PLUG 32A Cable gland diameter: 18 - 25 mm Not CSA approved</p>	1
815	554 30 49		<p>Starter START 351-400-B-PG-32</p> <p>351 3-phase 50 Hz 380V - 415 V Current range: 24 - 32 A Thermal contact supervision Overload supervision Phase sequence indicator Supply connection Terminal connection Cable gland diameter: 18 - 25 mm Not CSA approved</p>	1
815	554 30 59		<p>Starter START 351-500-B-PG-32</p> <p>351 3-phase 50 Hz 440V - 500 V Current range: 24 - 32 A Thermal contact supervision Overload supervision Phase sequence indicator Supply connection Terminal connection Cable gland diameter: 18 - 25 mm Not CSA approved</p>	1

Pos. No	Part. No	Type	Denomination	Qty/Version
				180
815	554 20 09		Starter START 356-600-A-PG-32 356-A 3-phase 60 Hz 440V - 480 V Current range: 24 - 32 A Overload supervision Supply connection Terminal connection Cable gland diameter: 13 - 25 mm CSA approved 356-A 3-phase 50/60 Hz 380V - 415 V Current range: 24 - 32 A Overload supervision Supply connection Terminal connection Cable gland diameter: 13 - 25 mm CSA approved	1
815	554 20 08		Starter START 356-600-A-PG-25 356-A 3-phase 60 Hz 575V - 600 V Current range: 20 - 25 A Overload supervision Supply connection Terminal connection Cable gland diameter: 13 - 25 mm CSA approved	1
815	824 35 06	Starter	Starter (Small box) DCM 711 3-phase 50 Hz 660V - 690 V Thermal contact supervision Cable area max: 6 mm ² Bluetooth Starter (Small box) DCM 711 3-phase 50 Hz 525V - 550 V Thermal contact supervision Cable area max: 6 mm ² Bluetooth	1
815	554 21 09		Starter START356-600-B-PG-32 356-B 3-phase 50/60 Hz 380V - 415 V Current range: 24 - 32 A Thermal contact supervision Overload supervision Supply connection Terminal connection Cable gland diameter: 13 - 25 mm CSA approved 356-B 3-phase 60 Hz 440V - 480 V Current range: 24 - 32 A Thermal contact supervision Overload supervision Supply connection Terminal connection Cable gland diameter: 13 - 25 mm CSA approved	1
815	554 21 08		Starter START 356-600-B-PG-25 356-B 3-phase 60 Hz 575V - 600 V Current range: 20 - 25 A Thermal contact supervision Overload supervision Supply connection Terminal connection Cable gland diameter: 13 - 25 mm CSA approved	1

Pos. No	Part. No	Type	Denomination	Qty/Version
				180
815	824 35 18		<p>Starter</p> <p>Starter (Large box) DCM 711 3-phase 50 Hz 380V - 400 V Thermal contact supervision Cable area max: 13,30 mm² Bluetooth WiFi</p> <p>Starter (Large box) DCM 711 3-phase 50 Hz 415V - 440 V Thermal contact supervision Cable area max: 13,30 mm² Bluetooth WiFi</p> <p>Starter (Large box) DCM 711 3-phase 60 Hz 440V - 480 V Thermal contact supervision Cable area max: 13,30 mm² Bluetooth WiFi</p> <p>Starter (Large box) DCM 711 3-phase 60 Hz 575V - 600 V Thermal contact supervision Cable area max: 13,30 mm² Bluetooth WiFi</p> <p>Starter (Large box) DCM 711 3-phase 50 Hz 500V - 500 V Thermal contact supervision Cable area max: 13,30 mm² Bluetooth WiFi</p> <p>Starter (Large box) DCM 711 3-phase 60 Hz 380V - 400 V Thermal contact supervision Cable area max: 13,30 mm² Bluetooth WiFi</p>	1
815	824 35 16		<p>Starter</p> <p>Starter (Small box) DCM 711 3-phase 50 Hz 525V - 550 V Thermal contact supervision Cable area max: 6 mm² Bluetooth WiFi</p> <p>Starter (Small box) DCM 711 3-phase 50 Hz 660V - 690 V Thermal contact supervision Cable area max: 6 mm² Bluetooth WiFi</p>	1
816	736 69 00		Wear part kit MT 50HZ	1
816	736 69 01		Wear part kit MT 60HZ	1
816	736 69 02		Wear part kit HT 50HZ	1
816	736 69 03		Wear part kit HT 60HZ	1
817	736 70 04		Hydraulic repair kit MT NBR	1
817	736 70 05		Hydraulic repair kit HT NBR	1
817	736 70 06		Hydraulic repair kit MT PU	1
817	736 70 07		Hydraulic repair kit HT PU	1
900	782 81 04		Basic repair kit	1



ООО «Бауманс Груп» - официальный партнер фирмы Flygt в России.

Тел: +7 495 121 49 50

Эл. почта: info@baumgroup.ru

Сайт: www.baumgroup.ru